

**NEW!**

# Swivel Fit<sup>®</sup>

## Variable Angle Fitting



**LOCKS**  
in place

**Multiple fittings in one!**  
Combines 90°, 45°, 22° & 0°

**Eliminate extra fittings**  
with one adjustable fitting  
for any job

**Convenient solution**  
patent-pending design  
works around obstacles  
and corners

**Easy** 3-step installation

**Fits 4"** drain pipe  
SDR-35, Triple wall  
and ASTM-D2729

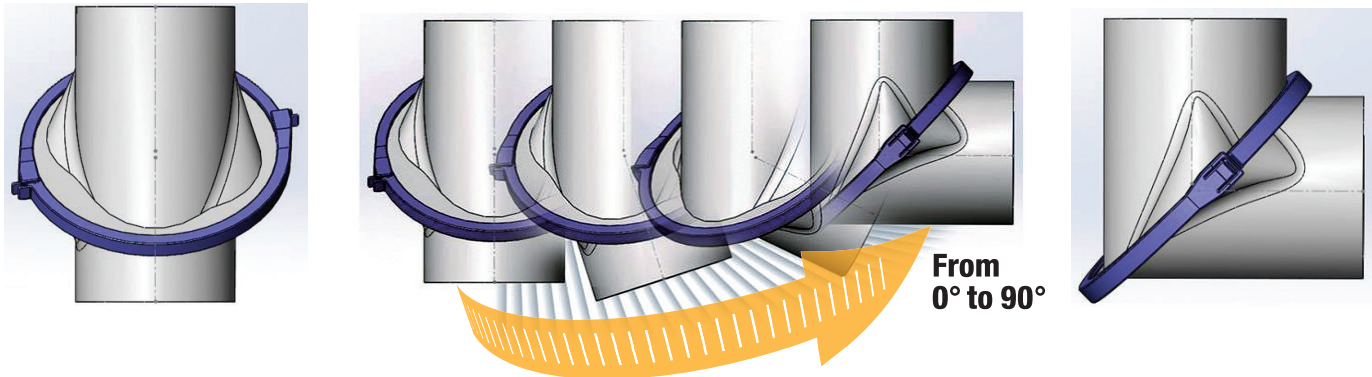
**ndspro.com**

for specs, detail drawings and case studies

**not for sewer use**

## One adjustable fitting for any job

The patent-pending Swivel Fit® Variable Angle Fitting can be set to any angle from 0° to 90°. It is a convenient solution to tackle any job and is easy and cheaper than connecting multiple fixed angle fittings.



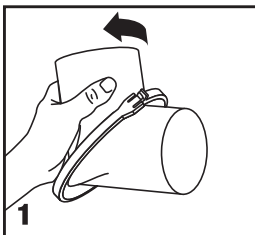
### Multiple angle fittings in one!

	0°	15°	22°	30°	45°	60°	90°
4PV02							✓
4PV03					✓		
4PV04			✓				
4PV05	✓						
4PVAF	✓	✓	✓	✓	✓	✓	✓

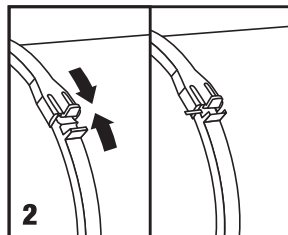
**ANY ANGLE. ANYTIME.**  
Fits these angles and **EVERYTHING** in-between!

Model#	Description	Product Category
4PVAF	NDS 4" Swivel Fit®	30PV

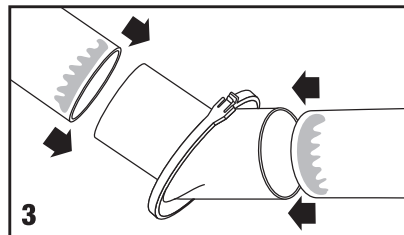
### Installation in 3 easy steps.



1 Rotate fitting to desired angle.



2 Lock angle in place by completely closing both locking ring clips.



3 Glue drainage pipe in both ends of fitting.

**For use with 4-inch SDR-35,  
Triple wall and ASTM-D2729  
Not for sewer applications**

**ndspro.com**

for videos, specs, detail drawings and case studies



851 N. Harvard Ave, Lindsay, CA 93247  
800-726-1994 nds@ndspro.com