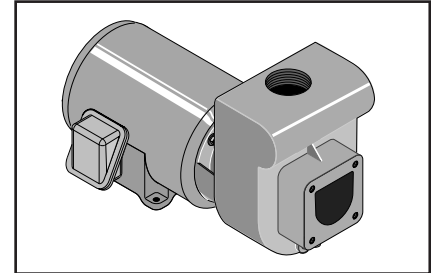


self-priming centrifugal pumps

DM/DH series

3 and 5 HP



Key No.	Part Description	No. Used	DMH-171 DMH3-171 DM2H-110 DM2H3-171 3 HP	DMJ-172 DMJ3-172 DM2J-172 DM2J3-172 5 HP	DHH-169 DHH3-169 DH2H-112 DH2H3-169 3 HP	DHJ-170 DHJ3-170 DH2J-113 DH2J3-170 5 HP
1	Motor - 60 Cycle - 230V, Single Phase	1	C218-177	C218-180	C218-177	C218-180
1	Motor - 60 Cycle - 208-230/460V, Three Phase	1	C218-179	C218-182	C218-179	C218-182
1	Motor - 60 Cycle - 200V, Single Phase	1	C218-191	C218-192	C218-191	C218-192
1	Motor - 60 Cycle - 200V, Three Phase	1	C218-178	C218-181	C218-178	C218-181
2	O-Ring #	1	U9-265	U9-265	U9-265	U9-265
2A	Sleeve #	1	C23-58	C23-58	C23-58	C23-58
3	Key - Square	1	U65-42A	U65-42A	U65-42A	U65-42A
4	Water Slinger - Single Phase	1	C69-15	C69-15	C69-15	C69-15
4	Water Slinger - 230/460V, Three Phase	1	C69-16	C69-15	C69-16	C69-15
4	Water Slinger - 200 V, Three Phase	1	C69-15	C69-15	C69-15	C69-15
5	Capscrew - 3/8 - 16 x 7/8" Lg.	8	U30-73ZP	U30-73ZP	U30-73ZP	U30-73ZP
6	Motor Adapter #	1	C2-66	C2-66	C2-66	C2-66
7	Gasket - Adapter #	1	C20-46	C20-46	C20-46	C20-46
8	Lockwasher - 3/8" #	4	U43-12ZP	U43-12ZP	U43-12ZP	U43-12ZP
9	Capscrew - 3/8 - 16 x 7/8" Lg. #	4	U30-73ZP	U30-73ZP	U30-73ZP	U30-73ZP
10	Shaft Seal #	1	U109-433SS	U109-433SS	U109-433SS	U109-433SS
11	Gasket - Seal #	1	C20-101	C20-101	C20-101	C20-101
12	Impeller (-113, -170) #	1	-	-	-	C5-249
12	Impeller (-112, -169, -171) #	1	C5-246	-	C5-248	-
12	Impeller (-172) #	1	-	C5-247	-	-
13	Wear Ring	1	J23-5	C23-14	J23-5	J23-5
14	Gasket - Impeller #	1	C20-100	C20-100	C20-100	C20-100
15	Washer - Impeller #	1	C43-45SS	C43-45SS	C43-45SS	C43-45SS
16	Gasket, Stat-O-Seal #	1	C43-46	C43-46	C43-46	C43-46
17	Screw - Impeller - 3/8 - 16 x 3/4" Lg. #	1	U30-72SS	U30-72SS	U30-72SS	U30-72SS
18	Volute Diffuser (w/Wear Ring, Key No. 13)	1	C101-126	C101-126B	C101-132	C101-132
19	Diffuser Ring	1	C21-2	C21-2	C21-2	C21-2
20	Pump Body	1	C76-12	C76-12C	C76-12B	C76-12
21	Pipe Plug - 1/4" NPT, Hex Hd. †	2	U78-941ZPV	U78-941ZPV	U78-941ZPV	U78-941ZPV
22	Capscrew - 5/16 - 18 x 3/4" Lg.	4	U30-60ZP	U30-60ZP	U30-60ZP	U30-60ZP
▪	Model Plate	1	U33-208SS	U33-208SS	U33-208SS	U33-208SS
▪	Decal, Warning	1	U27-781	U27-781	U27-781	U27-781
▪	Tag, No Motor Overload	1	U63-75	U63-75	U63-75	U63-75

▪ Not illustrated.

Included in Overhaul Kit.

† U78-57CT is used on Model DM2H3-171 only.

SERVICE KITS

# Overhaul Kit	C600-101	C600-102	C600-103	C600-104
----------------	----------	----------	----------	----------