



Self-Priming Multi-Stage Pump



The SSHM multi-stage series of sprinkler pumps delivers high-performance without priming problems and delays.

The SSHM multi-stage series is designed for minimal electrical consumption and quiet operation from the professional grade motor. The new SSHM multi-stage series offers first-in-class priming capabilities of up to 15 foot lifts!

APPLICATIONS

- Residential and commercial turf irrigation
- Residential water systems
- Shower and washing systems
- Water transfer
- Heating and air conditioning systems
- Water features and fountains

SPECIFICATIONS

Motor Bracket and Integral Pump Base – Close-grained cast iron, 1-1/2" NPT inlet connection, stable heavy-duty design for rigid pipe and solid base mountings

Discharge – Close-grained cast iron, 1-1/4" NPT discharge connection, with easy-access drain-port for end of season draining and winterization

Impellers and Diffusers – Noryl® precision molded extra-smooth ports to maximize efficiency and performance

Outer Shell – Polished 304 stainless steel

Shaft – 303 stainless steel

Priming Valve – Special brass priming valve, patented for trouble-free operation during the initial pump priming

Mechanical Seal – High-pressure seal, carbon-ceramic seal faces, Buna-N elastomers

Heavy Duty Motor – 2 HP, single-phase, 3450RPM, 230 Volt, high-service factor, capacitor-start/capacitor-run, open-drip proof motor, rated for continuous-duty operation. 230/460 TEFC available

Maximum Inlet Pressure – 20 PSI

Maximum Discharge Pressure – 130 PSI

Maximum Operating Temperature – 120°F (49°C)

Maximum Suction Lift – 15 feet

Number of Stages – 3 or 4

ORDERING INFORMATION

Catalog Number	Stages	HP	Pipe Tapping Sizes		Motor Voltage	Approx. Wt. Lbs.
			Suction	Discharge		
B82456-01	4	2	1-1/2" NPT	1-1/4" NPT	230 1ø	95
B82639	4	2	1-1/2" NPT	1-1/4" NPT	230/460 TEFC	95
B86073	3	2	1-1/2" NPT	1-1/4" NPT	230 1ø	95
B86074	3	2	1-1/2" NPT	1-1/4" NPT	230/460 TEFC	95

BERKELEY® is a registered trademark of Pentair Water. Noryl® is a registered trademark of General Electric Co.

In order to provide the best products possible, specifications are subject to change.

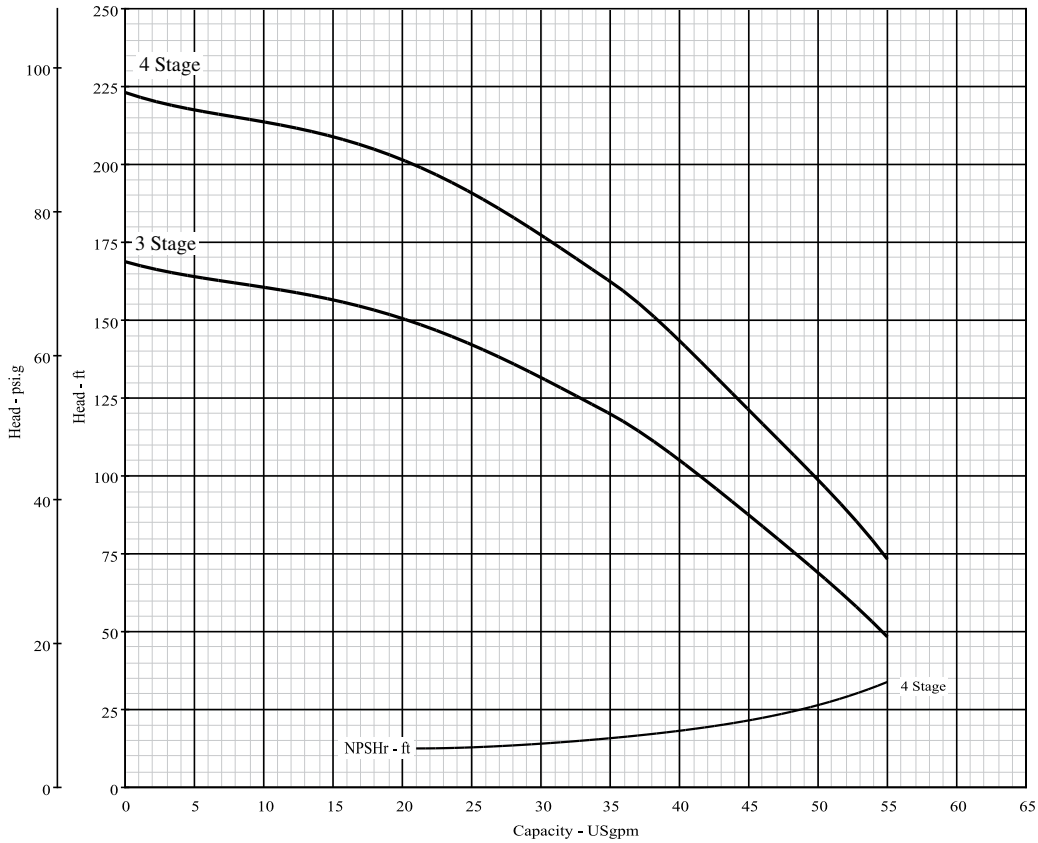


SSHM series

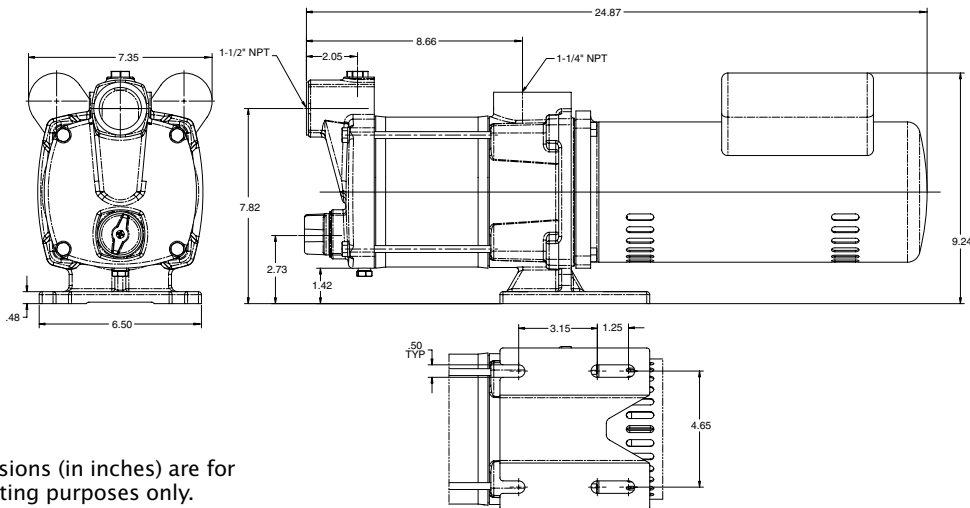
Self-Priming Multi-Stage Pump

PUMP PERFORMANCE

Nominal RPM: **3450**
 Based on Fresh Water@ **68 deg. F.**
 Maximum Working Pressure: **175 PSI**



OUTLINE DIMENSIONS



Dimensions (in inches) are for estimating purposes only.